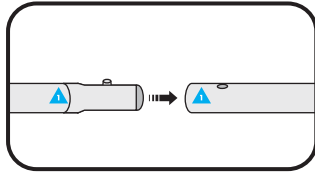


ASSEMBLY INSTRUCTIONS

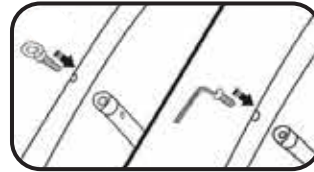


Assembled frame

- 1 Connect poles by matching shapes and numbers.



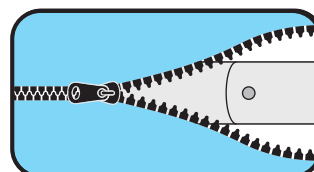
- 2 Connect and attach vertical spreaders with bolts/eyebolts



- 3 Pull graphic over frame.



- 4 Zip top closed.



*NOTE: COVER IS DESIGNED TO FIT SNUG/TIGHT TO HELP PULL OUT WRINKLES.