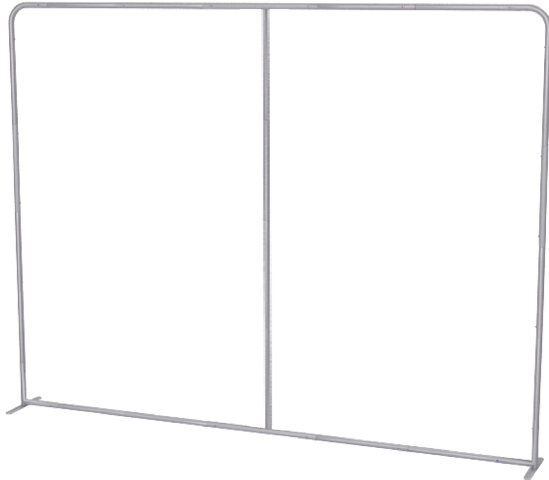


# INFINITY STRAIGHT WALL

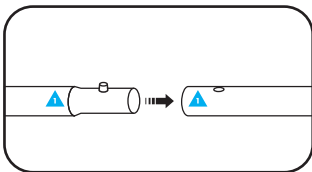


Assembled Frame

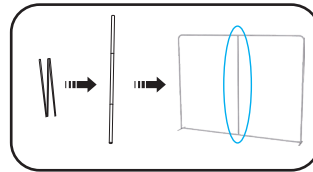


Assembled frame with graphic

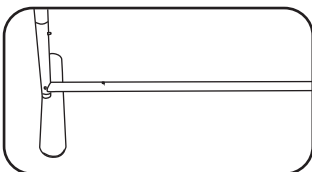
- 1 Connect poles by matching shapes and numbers.



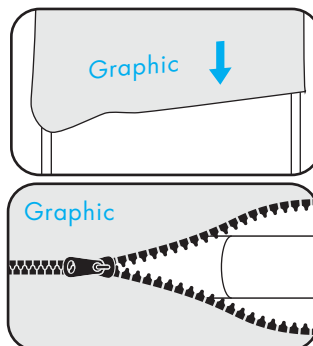
- 2 Connect and attach vertical spreaders (if included).



- 3 Connect stand to feet.



- 4 Slide graphic over frame and zip bottom closed.



NOTE: COVER IS DESIGNED TO FIT SNUG/TIGHT TO HELP PULL OUT WRINKLES