



OVERLAP PANELS

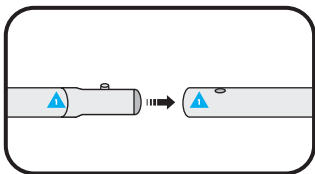


Assembled frame

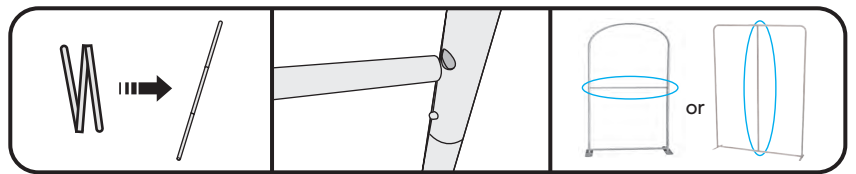


Assembled frame with graphic

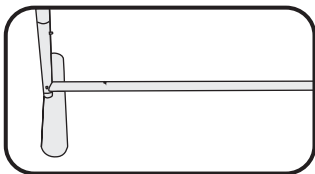
- 1** Connect poles by matching shapes and numbers.



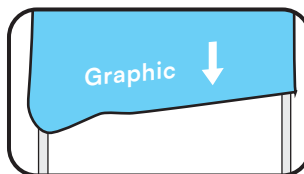
- 2** Connect and attach vertical / horizontal spreaders (if included).



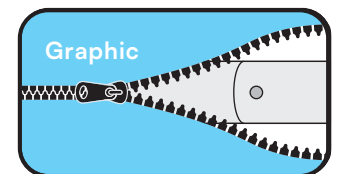
- 3** Connect stand to feet.



- 4** Slide graphic over frame.



- 5** Zip bottom closed.



*NOTE: COVER IS DESIGNED TO FIT SNUG/TIGHT TO HELP PULL OUT WRINKLES.