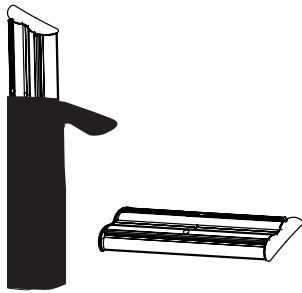
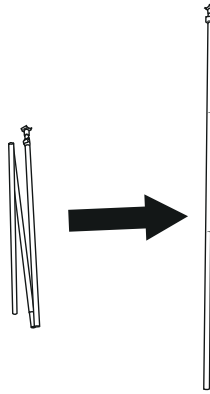


DOUBLE SIDED PREMIUM RETRACTABLE

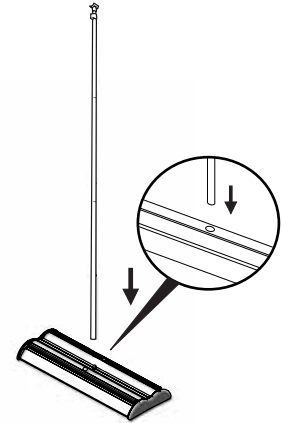
INSTRUCTION SHEET



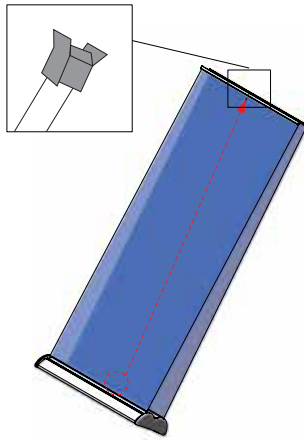
1 Assemble three piece bungee pole(s).



2 Assemble three piece bungee pole(s).



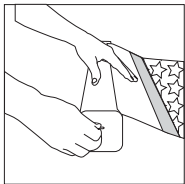
3 Secure pole in the base of stand.



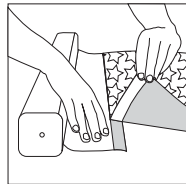
4 Gently lean the unit back and pull up by the toprail, and connect to top of pole.



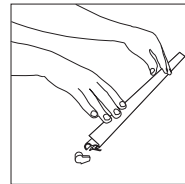
How to attach or replace graphics.



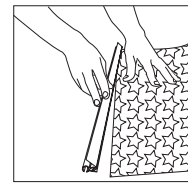
1 Pull graphic out until the leader is exposed. Insert locking pin to disable the roller.*



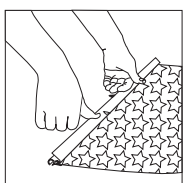
2 Remove graphic and replace.



3 Remove end caps and pull open the snap lock profile.



4 Once the snap-lock Profile is open insert top portion of graphic into profile.*



5 Apply even pressure to the snap-lock profile to lock graphic into place. Replace end caps.



6 Grip image and unit securely and remove locking pin. Slowly guide image back into unit.

*** CAUTION:** Do not remove the locking pin until the profile is attached to the graphic and the graphic is attached to the leader.